

Golf Historical Society

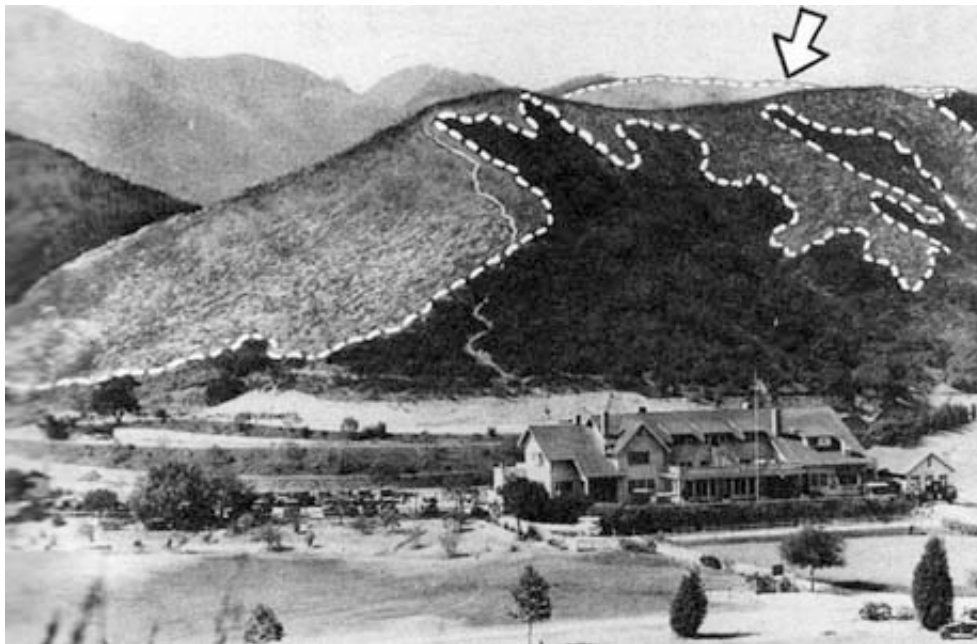
The 1933 Griffith Park Fire and the Golf Field House

by J.I.B. Jones



1920 photo of the east facing Griffith Park golf field house

This was the original English style Griffith Park golf field house that was funded through the city council and the Parks department budget, and was opened to golfers in May of 1918.



1933 field house with burn area and valley of death arrow marked behind.

Above is a photograph with the 1933 fire burn area marked on the hillside behind the field house, and with the arrow pointing into Mineral Springs canyon, where 33 unemployed volunteers died when they were sent down into the fire to fight it. The flames did not reach the clubhouse.

When money to build a bigger and better clubhouse became available with Federal infrastructure funds in the 1930's, the W.P.A. built a new clubhouse, designed in the Spanish Mission style that tourists were expecting when they came to the land of Ramona! The new building was placed directly in front of the

old "weatherbeaten and out-of-date field house," which was then scrapped.



1935 sketch of the east facade of the new mission style Griffith Park golf clubhouse.

Today's flag pole stands where the old clubhouse once stood. Could its grass island also be a homage to the round sand/oil greens of the old Municipal Links?

**All photos and words Copyright July 2014 JIBJones and the [Golf Historical Society](#)
Not to be reprinted without permission.**